



**S  
U  
R  
U**

折衷

DANCE - MUSIC - VIDEO  
in real time

TECHNICAL RIDER

MOBILIS IMMOBILIS COMPANY

[suru-performance.tumblr.com](http://suru-performance.tumblr.com)

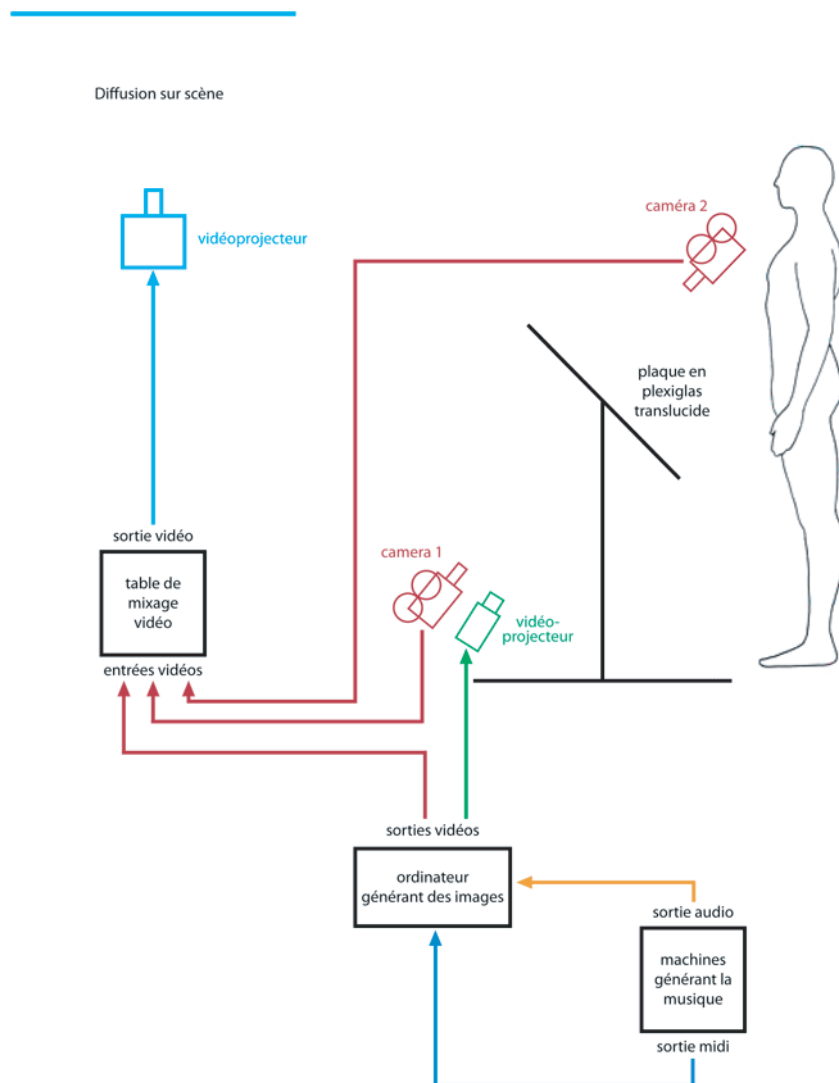
## Technical description of the project :

### Stage :

The show has a front video projection covering the whole of stage. A 4/3 projection screen is disposed at the back of the stage from ground to ceiling. The stage contains 4 legs drops : a set of two legs, one on each side of the front stage and a set of two legs to form a complete masking "frame" each side of the screen put on the back of the stage. Two kakemonos in white semi-translucent fabrics are suspended in the scenic space. Music is diffused from the front of stage.

### Sound and video :

The music is created in real time on analog hardware directly in link with the gestures of the dancers. These machines send midi information and sound to the computer that generates images within ISADORA software. The images are completely synchronized with the sound. This computer video is projected on a translucent plexiglass plate. The video artist works with smoke, vaporized water, paint, light, etc., directly on the plexiglass plate. The result is captured by two cameras and then goes through a video mixer to be projected on stage at the end. Both musician and video artist need to be in direct view of the stage with the dancers.



## Hardware provided by the artists :

### **Sound :**

Elektron SPS1 UWmk2  
Elektron DPS1  
Jomox T-resonator  
DSI Tempest  
FMR audio RNLA  
Sherman fliterbank 2  
MOTU ultralite hybrid Mk3  
Macbook air

### **Video :**

1 Macbook  
1 MOTU ultralite hybrid Mk3  
1 MOTU Fastline  
2 Mini-converter Blackmagic  
1 videoprojector OPTOMA 3000lumens  
1 camera Sony PC1  
1 camera Sony HDR-SR10  
1 mixer video Edirol V4  
1 plexiglas plate  
1 smoke machine

### **Light :**

1 LED bar  
1 light console BOTEX SDC-6  
1 pars 16

### **Scenography :**

2 kakemonos

## Technical needs :

### **Venue constraints :**

The stage should be at least 7 m x 4,5 m.  
The flooring of the scene can be parquet or must be equipped with a matte black dance carpet.  
Fly towers must contain 3 fly bars: one in the front stage, one at the middle stage, one in the back stage.  
The venue must afford enough perspective to be able to project over the whole stage.

### **Sound :**

- Diffusion :

The sound system (2.1 type) should be of a professional quality and installed in order to obtain a flat frequency and pressure response (105 dbA) in all points of the space.

- Feedback :

4 ambient sound from floor wedges (2 for the musician stage left, 2 for the videomaker stage right).  
2 ambient sound stand-up sound wedges at the back of the stage for the dancers.

- Front control :

To provide a numerical or analog console (8 channels).

4 DI (connections jacks 6.35) and connecting cables from the stage to the console and sound wedges.

- Power supply :

To provide power supplies for the stage, at least 2 multi-sockets (5 way) with an OFF switch and 2 extension cords of 5 m.

- Accessories :

1 table : 120 x 100 x 100cm (length x width x height)

**Video :**

1 videoprojector 10 000 lumens, mounted on feet or with bracket system, depending on the venue.  
PAL input (composite). Please let us know what focal length you use.

1 screen 6m / 4m

1 table 1,5 m x 1 m x 1 m high

BNC cables

**Lights :**

8 PC 1KW

2 PARS 64 en CP62

1 DMX stroboscop (1KW)

1 dimmer 12 x 3 KW

1 light console

PC16A cables

DMX cables

**Stage :**

4 pendrillons, dimensions depending on the venue.

1 frise

1 matte black dance carpet, depending on the venue.

**Installation time and reprise :**

Installation time : 5h00

Reprise of the show : 1h30.

**Technical team to provide by the venue :**

1 stage manager for sound

1 stage manager for lights

1 stage manager

At least 2 technicians for the dismantling

Rider :

**Arrival, car park and transfers :**

In case of a train or plane journey, the organizer is committed to assure the train station or airport transfers to the performance hall and all the transfers linked to the show (hotel, restaurant, places of promotion...) for 5 persons and their luggages.

**Boxes, meals and accommodation :**

- Boxes and catering :

To provide dressing rooms near the stage (access without passing the public zone). They will be heated in winter. The dressing rooms should be locked up, the keys will be given to the house manager and returned upon departure of the artists.

- Dinner :

To provide a catering to be taken before or after the representation, at the artists convenience.

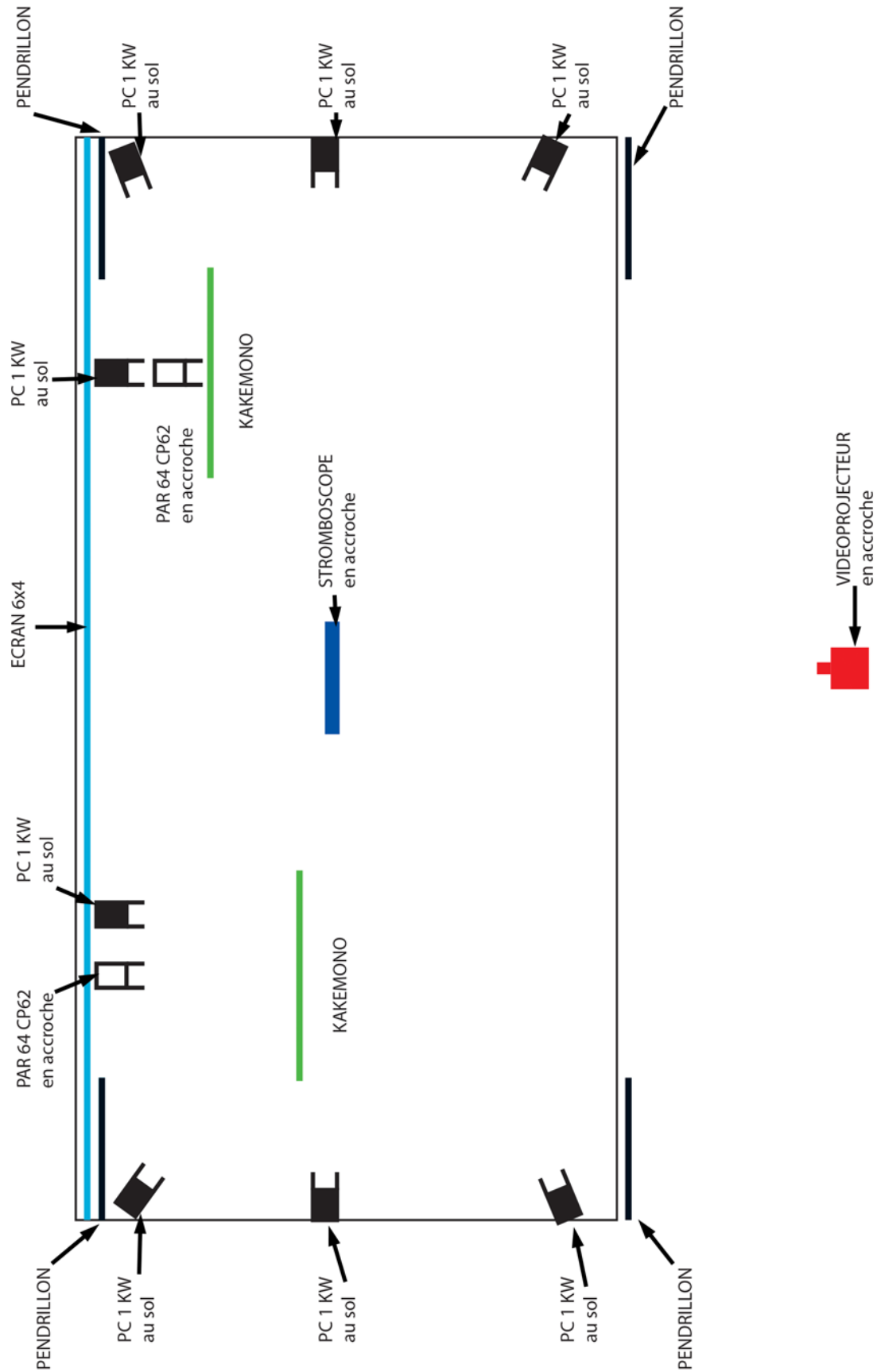
- Hotel :

3 single rooms and 1 double room situated at a 15-minute walk (or less) to the performance hall.

**SURU**

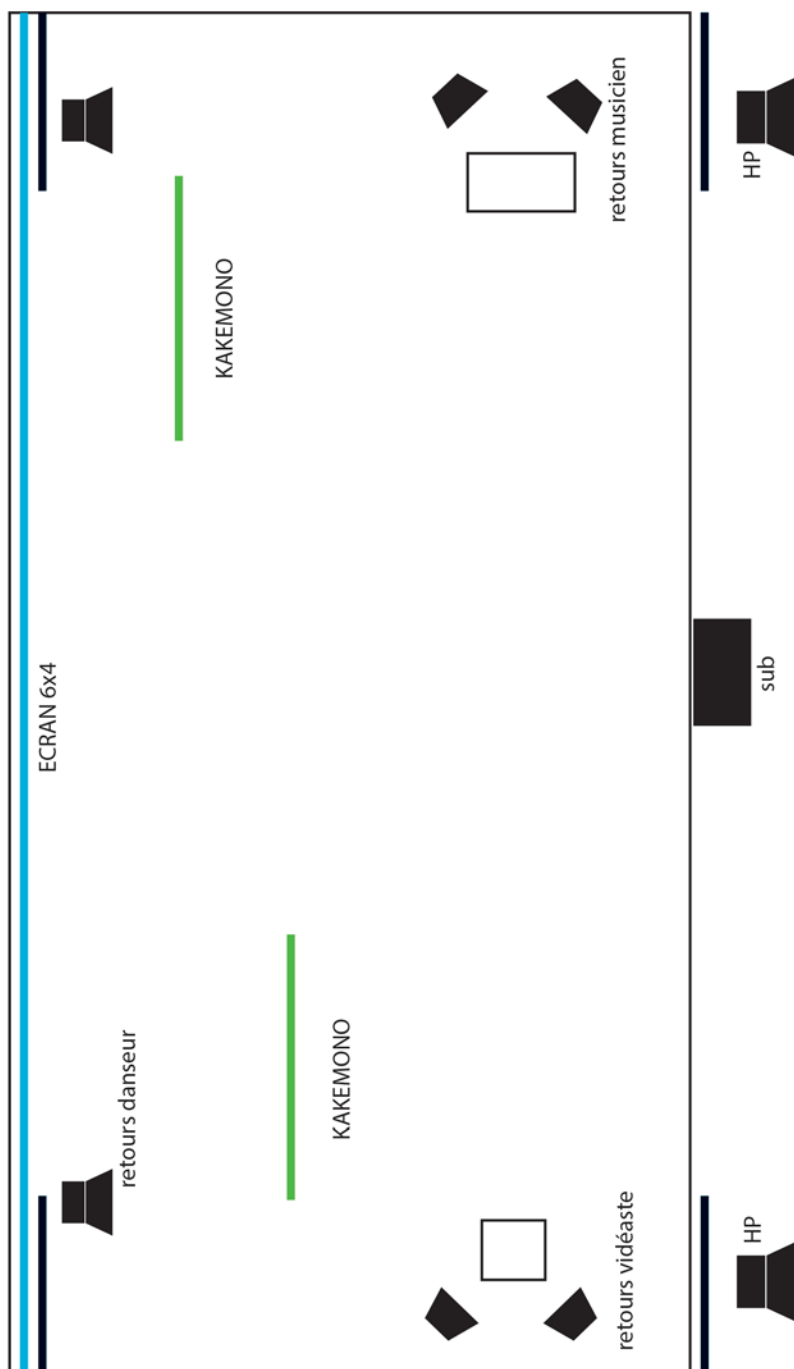
Plan d'implantation

contact: Etienne Bernardot 0612134388  
suru.performance@gmail.com



# SURU

Plan d'implantation son  
contact: Stéphane Bissières 0680872071  
suru.performance@gmail.com



## **CONTACTS**

Video and light / Etienne Bernardot : +33 (0) 612134388 e.bernardot@icloud.com  
Sound / Stéphane Bissières : +33 (0) 6 80 87 20 71 bunqbox@gmail.com

mobilis\_immobilis@yahoo.fr  
Mobilis-Immobilis  
45, rue Anatole France • 92370 Chaville  
France  
Tel: +33 (0) 683 428 875 ///  
[www.mobilisimmobilis.com](http://www.mobilisimmobilis.com)